



**Dunarea de Jos
University
Galati**



**Mental Health Association
of South-Eastern Europe**



**Elisabeta Doamna
Psychiatric Hospital
Galati**

1st EASTERN EUROPEAN CONFERENCE OF MENTAL HEALTH

CONFERENCE

11 - 14 May 2017

**Natural Sciences Museum Complex
Razvan Angheluta - Botanical Garden
6A Regiment 11 Siret Street, Galati**

EMC COURSE

**Mental Health.
Concepts. Ideas. Connections.**

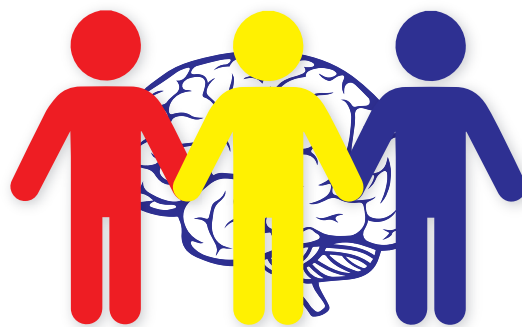
11 May 2017

**Nae Leonard Musical Theatre,
50 Mihai Bravu Street, Galati**

**in and
out of
your
mind**

www.mhasee.ro

**Galati, Romania
11-14 May 2017**



IN AND OUT OF YOUR MIND

1st EASTERN EUROPEAN CONFERENCE OF MENTAL HEALTH

"IN AND OUT OF YOUR MIND"

GALATI, ROMANIA, MAY 11 – 14, 2017



Colegiul Medicilor
Galați



Primăria Municipiului Galați
Consiliul Local Galați



Consiliul Județean
Galați



Inomedica



Atlas-help.ro



reperemedicale.ro



Societatea Studenților
Mediciști Galați



Bulgarian Academy of
Sciences and Arts (BASA)



Asociația Actaria
Galați

sponsor de platină

janssen

PHARMACEUTICAL COMPANIES
OF *Johnson & Johnson*



sponsori



a SUN PHARMA company



Știință și suflet



**BERLIN-CHEMIE
MENARINI**



1st EASTERN EUROPEAN CONFERENCE OF MENTAL HEALTH "IN AND OUT OF YOUR MIND"

GALATI, ROMANIA, MAY 11 – 14, 2017

President of Conference

Prof. Howard H. Goldman (USA)

President of Honor of Conference

Prof. Aurel Nechita (Romania)

President of Local Organizing Committee

Assoc. Prof. Anamaria Ciubara (Romania)

Scientific Committee

Assoc. Prof. Nikolina Angelova (Bulgaria)
Assoc. Prof. Jana Chihai (Moldova)
Professor Ariel Como (Albania)
Prof. Ion Coşciug (Moldova)
Lecturer Eduard Polea Drima (Romania)
Lecturer Lavinia Duica (Romania)
Assoc. Prof. Hristo Hinkov (Bulgaria)
Assoc. Prof. Maria Ladea (Romania)
Prof. Petar Marinov (Bulgaria)
Dr. Vladimir Nakov (Bulgaria)
Assoc. Prof. Joachim Nitschke (Germany)
Lecturer Mihail Pirlog (Romania)
Prof. Marco Sarchiapone (Italy)
Assoc. Prof. Vaska Stancheva-Popkostadinova (Bulgaria)
Prof. Drozdostoj Stoyanov (Bulgaria)
Lecturer Alin Tatu (Romania)
Assoc. Prof. Sonila Tomori (Albania)
Prof. Germain Weber (Austria)

Local Organizing Committee

Assoc. Prof. Valentin Antohi (Romania)
Assoc. Prof. Ciprian Dinu (Romania)
Prof. Costinela Georgescu Romania)
Dr. Oana Hanut (Romania)
Prof. Madalina Matei (Romania)
Dr. Mihai Mutica (Romania)
Lecturer Catalin Plesea Condratovici (Romania)
Prof. Doina Carina Voinescu (Romania)

Scan the code for more details » <https://mhasee.ro>



Lecturer Dragos Alexandru (RO)



Graduate degree (Sep 2004) in both Medicine (followed by MSc in Management of Health Care Units)

and Informatics (followed by MSc in Artificial Intelligence and Communications Technologies), PhD in Medicine (Sep 2012, Physiology). Specialist M.D. in Public Health and Management (Dec 2009). Junior Teaching Assistant (Oct 2005) and Teaching Assistant (Mar 2009) in the Department of Medical Informatics and Biostatistics of the University of Pharmacy and Medicine of Craiova. Contributions to many scientific papers from various fields of medical practice and research, published in international and national peer-reviewed journals, due to his involvement in Biostatistics.

Dr. Ciprian Bacila (RO)



Psychiatrist in "Dr. Gh. Preda" Psychiatric Hospital Sibiu. I graduated the "Iuliu Hatieganu"

University of Medicine and Pharmacy – Cluj Napoca, and I have a Master's Degree in Health Management and a PhD in Health Sciences. I have attended several training courses (graduated as a psychotherapist in positive psychotherapy, specialized in autogenic training in psychotherapy, basic training in good clinical practice for clinical research professionals, competence in emergency medicine) and, since 2013, I am associated professor at the "Lucian Blaga" University of Sibiu, Faculty of Psychology. Nowadays, I am the medical director of the Psychiatric Hospital "Dr. Gh. Preda" Sibiu.

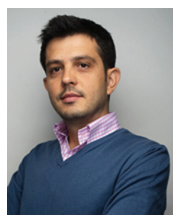
Dr. Ovidiu Alexinschi (RO)



MD, PhD, Senior Psychiatrist, Institute of Psichiatrie Socola, Iași. President of Bridging

Eastern and Western Psychiatry Romania. Coordinator of programs ACAR Don Orione.

Teaching Assist. Mihai Bran (RO)



Psychiatrist, Assistant Professor and PhD student at the University of Medicine and Pharmacy Carol

Davila Bucharest. He is a digital health enthusiast and co-founder of Inomedica, a NGO that promotes online information and education for both patients and medical specialists and co-founder of Atlas (atlashelp.ro), the first platform for online video psychotherapy sessions.

Prof. Florin Buhociu (RO)



Professor in Economics at "Dunarea de Jos" University in Galați. My father was a pediatric

physician and my mother a pharmacist, both were people committed to human health care, children and adults. Living in this environment I have known closely the specific of these noble professions. But I chose the economics profession and then, climbing stairs of the academic career, that of professor of economics. Studying different areas of the society from the economic point of view, I was able to highlight links and correlations between significant economic sectors.

Assoc. Prof. Valentin Marian Antohi (RO)



Associate Professor, doctoral studies in Economy, member of Economic Department at the Faculty

of Economics and Business Administration, University "Dunarea de Jos" Galați. Professional expertise: scientific research, member of the research project team – PN II, Capacities, China – Romania Bilateral Cooperation research projects focused on the introduction of Information Communications and Technologies in the management of the economic activities. Domains of research and publication: Knowledge Management, Financial and Economic Analysis, Health Services, Public Finance, Medical Economy, Rural and Regional Development.

Prof. Diana Bulgaru Iliescu (RO)



Graduated the Faculty of Medicine, forensics discipline habilitat professor at Gr.T.Popa UMF Iasi,

teaches forensic. Forensic MD and Director of the Institute of Legal Medicine Iasi. She holds a PhD in Medical Sciences and has a Master in Bioethics. She is a member of the Superior Committee of Legal Medicine, founding member of the Romanian Society of Bioethics and member of the Legal Medicine Society. Author and co-author of over 90 articles published in scientific journals with impact, chapters and books in the field of forensics. Over 10 years experience in forensic psychiatric expertise committee.

Assoc. Prof. Jana Chihai (MD)



MD, PhD, MsC, psychiatrist and psychotherapist from Republic of Moldova, associate

professor in Psychiatry Department of State Medical and Pharmaceutical University "Nicolae Testemitanu" in Chisinau, Republic of Moldova and senior Mental Health Advisor in Trimbos Institute Moldova, project MENSANA. Additionally she is a President of National Society of Psychiatrists, Narcologists, Psychotherapist and Clinical Psychologists. She studied medicine and psychiatry, received psychotherapeutic specialization in European School of Psychotherapy, Socio- and Somatoanalyse in Strasbourg, France and Association of Integrative Psychotherapy and Clinical Psychology, Iași Romăna.

Dr. Gabriela Chele (RO)

MD, PhD is assistant professor in psychiatry at "Grigore T. Popa" University of Medicine and Pharmacy Iasi, Romania, Department of Psychiatry and senior psychiatrist in the Institute of Psychiatry Socola Iasi, Romania. She has a strong background in children and adolescents, especially in behavioural and social disturbances, violence or the impact of the computer use in development of teenagers. She has been member in national and international projects. She organized and delivered a number of trainings and seminars for young people and professionals – teachers, school counsellors – in the area of preventing addictions and development of social skills.

Dr. Ghenadie Carausu (MD)



Associate professor at the Department of Psychiatry, Alcoolology and Medical Psychology of the

State University of Medicine and Pharmacy „Nicolae Testemitanu”, Chisinau, Moldova. Scientific Secretary at the Department of Psychiatry of Annual Scientific Conferences SUMPh „Nicolae Testemitanu”, member of Society of Psychiatry, Alcoolology, Clinical Psychologists and Psychotherapists of Moldova, of the Moldovan Society of Psychoanalytical Psychotherapy and of the Society of Sleep Medicine.

Professor Ariel Como (ALB)



MD, Professor of Psychiatry at the Tirana Medical University, is currently clinical Head of Psychiatry Division, Department of

Neuroscience, Tirana University Hospital Center "Mother Tereza", Deputy Dean for Continuing Medical Education at the Faculty of Medicine, Tirana Medical University; member of the Directors' Council of postgraduate schools in Neurosciences (including General Psychiatry and, Child and Adolescent Psychiatry), member of the National Steering Committee on Reforming the Mental Health Sector, and member of working group on developing inter-sectorial strategy on Child and Adolescent Mental Health.

Assoc. Prof. Anamaria Ciubara (RO)



Certified physician practicing psychiatry at "Elisabeta Doamna"

Psychiatry Hospital, Galati, Romania. She is teaching Psychiatry and Behavioral Sciences course as Associate Professor at the Faculty of Medicine and Pharmacy within the „Dunarea de Jos" University Galati. Anamaria Ciubara is a member of Psychiatric Advisory Committee for Ministry of Health, editor of the „American Journal of Psychiatry and Neuroscience" and is involved in many research, educational and advocacy projects in psychiatry.

Prof. Ion Coșciug (MD)



MD, PhD, Associate professor at Psychiatry Department of the

State University of Medicine and Pharmacy "Nicolae Testemitanu" Chisinau, Republic of Moldova. Member of committees of Ministry of Health, trainer in projects related with mental health promotion and disease prevention in Republic of Moldova. Author of over 180 scientific papers published in Moldova and abroad, involved in the development of 3 national clinical protocols. 27 years of didactical activities in Medical school and Medical State University.



Scan the code for complete information regarding the speakers » <https://mhasee.ro>

Lecturer Eduard Drima (RO)



MD, psychiatrist who conducted several years Braila psychiatric hospital; currently coordinating the first section of the Psychiatric Hospital „Elisabeta Doamna” Galati. Lecturer on the Faculty of Medicine Galati, and trained several generations of students and resident physicians.

Dr. Oana Hanut (RO)



Certified senior psychiatrist at “Elisabeta Doamna” Psychiatry Hospital Galati Romania.

She graduated University of Medicine and Pharmacy “Iuliu Hatieganu” Cluj Napoca in 2005. Oana Hanut has a certificate in Health Management and also co-ordinate the medical activities as Medical Director. She is involved in many research and advocacy projects in psychiatry.

Assoc. Prof. Maria Ladea (RO)



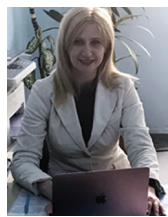
MD, PhD, Associate Professor at the University of Pharmacy and Medicine “Carol Davila”, Bucharest. She completed her training in psychiatry and psychotherapy in Bucharest and Paris. Beside the clinical activity, she is also involved in research, and therefore had published books and articles in her expertise field: depression, schizophrenia, eating disorders. She is co-founder of Inomedica, a NGO which sustain and promotes the application of new technologies in medicine and education, the sites www.depresiv.ro and www.schizofrenia.ro being two of the most successful projects.

Dr. Mihai Mutica (RO)



Have graduated „Grigore T. Popa” University of Medicine and Pharmacy from Iasi. He has completed his PhD from University of Medicine and Pharmacy Craiova in 2016 and in present he is certified physician practicing psychiatry at “Elisabeta Doamna” Psychiatry Hospital, Galati, Romania.

Lecturer Lavinia Duica (RO)



Lecturer at “Lucian Blaga” University of Sibiu, Chief of the Clinic Department of the “Dr. Gh. Preda” Psychiatric Hospital Sibiu and esidency coordinator. She has graduated University of Medicine and Pharmacy Craiova and Faculty of Psychology “Lucian Blaga” University of Sibiu; she has been trained in Psychiatry in Craiova and Sibiu and in “Existential Analysis and Logotherapy” Counselling and Psychotherapy School in Bucharest. She obtained her PhD at the “Gr. T. Popa” University of Medicine and Pharmacy Iasi. Dr. Lavinia Duica participated at numerous national and international scientific manifestations and is the author of many scientific works. Her areas of interest are suicidal behavior, schizophrenia, affective disorders, mental health services and existential analysis psychotherapy.

Dr. Iolanda Dumitrescu (RO)



Consultant Psychiatrist, Manager of Psychiatric Hospital “Eftimie Diamandescu”

Balaceanca, Ilfov County. Former co-ordinator of Alcohol Related Disorders Ward at the same hospital.

Iolanda Dumitrescu has graduated the University of Medicine and Pharmacy Carol Davila, General Medicine Faculty, and has achieved her specialist degree in Psychiatry after training in Prof. Dr. Al. Obregia Clinical Hospital of Psychiatry in Bucharest. She is a Consultant Psychiatrist since 2015.

Former member of European Federation of Psychiatric Trainees Research Workgroup. Author and co-author of several scientific papers and oral presentations with focus on Psychiatric ethics (Attitudes of the medical professionals towards the psychiatric patients, Treatment choice in Psychiatry, Use of physical constraint in intensive care units) and specific Psychiatric pathologies (frontal lobe syndrome, adult attention deficit disorder).

Since 2016, Dr. Dumitrescu co-ordinates the Legislation and Patient Rights Workgroup of the Romanian Association of Psychiatry and Psychotherapy.

Prof. Petar Marinov (BG)



Associate Professor, MD, PhD, National Consultant of Forensic Psychiatry.

Head of the Standing Committee for Professional Standards and By-Laws of the Bulgarian Psychiatric Association.

Howard H Goldman (USA)



MD PhD, Professor of Psychiatry, Director of the Behavioral Health Systems Improvement

Collaborative, University of Maryland School of Medicine. Howard H. Goldman received joint M.D. – M.P.H. degrees from Harvard University and a Ph.D. in social policy from Brandeis University in 1978. He is the author or co-author of more than 325 publications in the professional literature.

Dr. Goldman was the editor of the journal *Psychiatric Services* from 2004 – 2016, and he served as the Senior Scientific Editor of the Surgeon General's Report on Mental Health from 1997-1999 for which he was awarded the Surgeon General's Medallion. In 1996 he was elected to membership in the National Academy of Social Insurance, and in 2002 he was elected to the Institute of Medicine.

Dr. Cristian Marinescu (RO)



Psychiatrist at Emergency County Hospital Pitesti, Psychiatry Department,

he has numerous papers presented at World and European congresses of psychiatry and valuable experience in medical research. For more than 10 years he is member of the forensic psychiatric committee.

He is speaker at national and international events and try to bring all new medical information in order to open psychiatrist appetite for a logical and pragmatic psychiatry, the future in the field. Among current projects is a book of clinical psychopharmacology, which will be written with colleagues, prestigious psychiatrists in the country.

Assoc. Prof. Marius Milcu (RO)



Ph.D., Lucian Blaga University of Sibiu, Department of Psychology, Romania –

Assistant professor and Director of Centre for Psychological Research.

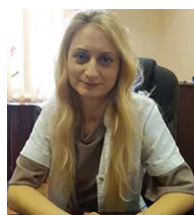
Association for Qualitative and Intercultural Studies in Psychology – President.

Private practice in psychology – licensed in clinical psychology, work and organizational psychology, military and forensic psychology.

Expertise fields:

- Organizing scientific and educational events (professional events, lectures, training courses, workshops, symposiums, conferences);
- Assessing, counseling, documenting and informing on areas relevant to social and human sciences;
- Putting together, editing and distributing scientific papers (magazines, books, brochures, specialized software, assessment tools, etc.);
- Scientific and applied research in the fields of interest.

Dr. Petronela Nechita (RO)



Specialist psychiatrist at the Psychiatric Institute Socola Iasi. She has a PhD in medical sciences in 2014. The doctorate was held at the Department of Forensic Medicine at the University of Medicine "Gr. T. Popa "Iasi, Romania. During doctoral studies, supported by a program POSDRU, she followed an international

mobility at the Institute for Medical Ethics and History of Medicine at the Ruhr University – Bochum Germany.

Dr. Irina Sacuiu (RO)



Senior Psychiatrist – Professional focus targeted towards clinical and research activity – with a PhD in Medical Science, a formation at the Institute of Psychiatry "Socola" Iasi where she is still professing as a doctor, she is also blending her medical activity with a didactic one, working as Lecturer at the

"Apollonia" University Iasi. Her work has been published in national and international journals ranked ISI and CNCSIS B+. Irina Săcuiu is Member of Advisory Board of "Bulletin Of Integrative Psychiatry", member of the County Commission of Forensic Psychiatric Expertise.projects in palliative care.

Prof. Joachim Nitschke (DE)



Trained neurologist, psychiatrist and psychotherapist who specialised in the field of forensic

psychiatry. In 2010, he has become Head of the Clinic of Forensic Psychiatry of Ansbach District Hospital. Since 2014 he teaches forensic psychiatry at the University of Regensburg, Germany, as an associate professor. His special research interests are in the field of paraphilias, psychopathy and the field of schizophrenia and violence.

Dr. Vladimir Nakov (BG)



Chief expert in Department "Mental Health" at the National Centre of Public Health

and Analyses, Sofia, Bulgaria. Vladimir studied medicine at the Medical University – Pleven. Since 1998 he worked at several psychiatric hospitals as a psychiatrist. In 2002, he became a specialist in psychiatry. Since January 2015 he is defending PhD study in the field of social medicine. Since 2007 Vladimir Nakov has been working in the field of mental health promotion and prevention of mental disorders, especially of prevention of suicide in Bulgaria. [...]

Lecturer Mihail Cristian Pirlog (RO)



PhD, MPH, Lecturer at the Faculty of Medicine – University of Medicine and Pharmacy of Craiova, and Director of Department for Didactical Training of the same university; Sociologist and Coordinator of National Mental Health Program – Prophylaxis in Psychiatric Pathology developed by Romanian Ministry of Health and Clinical Hospital of Neuropsychiatry of Craiova; President of Mental Health Association of South-Eastern Europe (MHASEE), member of European Scientific Association on Schizophrenia and other Psychoses (ESAS), European Psychiatric Association – Section of Suicidology and Suicide Prevention (EPA-SSSP), European Public Health Association (EUPHA) – Section on Chronic Diseases. [...]

Psih. Raluca Nica (RO)



Involved in the mental health area since 1995, as clinician psychologist and cognitive-behavioral psychotherapist. PhD in medicine. As executive director of the Romanian League for Mental Health, over her career she has developed, implemented and lead as coordinator over 30 projects. Also, she actively participated in drafting mental health legislation and strategies. Since 2006 she is a member of the Board of the European organization's GAMIAN Europe.

Psih. Georgeta Niculescu (RO)



Psychotherapist in Person Centered Psychotherapy and clinical psychologist with over

15 years experience in clinical and private practice. Supervisor in clinical psychology, trainer and supervisor in Person Centered Psychotherapy with basic training in Romania and Austria, and continuing education in the country and abroad. Georgeta Niculescu is one of the founding members of the Romanian Association for Person Centered Psychotherapy and she is involved in national and international research projects. [...]

Assoc. Prof. Serban Turluc (RO)



MD, PhD, Senior Psychiatrist, Institute of Psychiatry Socola, Iași. Associated

Professor in Psychiatry on Gr. T. Popa University of Medicine and Pharmacy Iasi, Romania.

Lecturer Catalin Plesea Condratovici (RO)



Have graduated "Carol Davila" University of Medicine and Pharmacy Bucharest. He has

been trained in Family medicine and obtained his PhD at the "Gr. T. Popa" University of Medicine and Pharmacy Iasi. In present he is Lecturer at Faculty of Medicine and Pharmacy Galati. His areas of interest is wide, including but not limited to mental health services, computer-aided imagistic, microelectronics and microcontrollers medical applications, population based medical studies and health economics focused on primary care.

Dr. Dan Rosca (RO)



Consultant Psychiatrist since 1998, Chief Physician of the XVI Section in the Clinical

Psychiatric Hospital "Prof. Dr. Al. Obregia", Bucharest, Fellow of the Psychiatric Board of the Romanian Ministry of Health. Dr. Dan Rosca has graduated the Faculty of General Medicine, at "Carol Davila" University of Medicine and Pharmacy, Bucharest, Romania and has achieved his specialty degree in Psychiatry after training at the Clinical Psychiatric Hospital "Prof. Dr. Al. Obregia", Bucharest. Dr. Dan Rosca has an experience of more than 15 years in the field of Forensic Psychiatry and has been a member of the Committee of Forensic Expertise at the National Forensic and Legal Medicine Institute Bucharest. He has been, for 7 years, the Chief of the Psychiatry Committee of the Bucharest Public Health Authority.

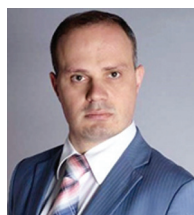
Dr. Marcel Sarpe (RO)



MD, Senior Psychiatrist has graduated the Faculty of General Medicine,

at "Gr.T. Popa" University of Medicine and Pharmacy, Iași, Romania (1998-2003) and has achieved his specialty degree in Psychiatry after training at the Clinical Psychiatric Hospital "Prof. Dr. Al. Obregia", Bucharest (2009), and senior MD in 2015. [...] Co-author at 2 books, many articles and posters published in national and international congresses. Studies in Rogers Psychotherapy and in Cognitive-Behavioral Therapy.

Prof. Drozdtoj Stoyanov (BG)



MD, PhD, PgCert, currently Dr Stoyanov holds the academic position of

Full Professor of Psychiatry, Medical Psychology and Person Centered Medicine; Head of the Neuropsychiatry and Brain Imaging Group at the University of Medicine in Plovdiv; honorary lecturer in the Sofia University Faculty of Philosophy, Clinical psychology and counseling program. He is also Vice President of the Bulgarian Academy of Science and Arts, Chairperson of the Science Division.

Since 2015 Dr Stoyanov is involved as a project partner in the Collaborating Center for Values Based Practice in Health and Social Care, St. Catherine's College, University of Oxford. Visiting Lecturer, University of Copenhagen. Associate Editor, European Journal for Person Centered Healthcare; Review Editor, Frontiers in Psychiatry.

Lecturer Vladimir Poroč (RO)



Certified physician practicing palliative care and coordinator of the Palliative

Care Unit from the Regional Institute of Oncology Iași. He is teaching "palliative care" course as lecturer at the Faculty of Medicine within the University of Medicine and Pharmacy "Gr.T. Popa" Iași. Vladimir Poroč is the vice-president of National Romanian Association of Palliative Care (ANIP) and is involved in many research, educational and advocacy projects in palliative care.

Prof. Germain Weber (AU)



Ph.D., born in Luxembourg, is professor of Psychology at the University of Vienna, Faculty

of Psychology, Department of Health, Development, Enhancement, Intervention. From October 2008 to September 2016 Prof. Weber acted as Dean of the Faculty of Psychology at the University of Vienna, and subsequently as Vice-Dean. [...] Since many years Dr. Weber is involved in European Union funded research projects on learning disabilities, intellectual disabilities, aging and assistive technologies. Dr. Weber has authored over 100 publications and has lectured in many countries on topics related to the areas mentioned, including mental health issues. After earning his doctoral degree in 1982 at the University of Vienna, Dr. Weber won a post-doc position (Fulbright fellowship) at the State University of New York – Stony Brook, Department of Psychology. [...]

Dr. Petre Radescu (RO)



Born: Craiova, Romania, on July 4, 1976. Private praxis: counseling, psychotherapy,

psychiatry, Bucharest, since 2012; psychotherapy training since 2014.

Prof. Marco Sarchiapone (IT)



Marco Sarchiapone – Psychiatrist and psychoanalyst, is Professor of Psychiatry

at the University of Molise, Italy. He is the Chairman of the Section of Suicidology and Suicide Prevention of the European Psychiatric Association (www.suicidologysection.org), member of the Section of Suicide of the World Psychiatric Association, member of the International Academy of Suicide Research [...]

Assoc. Prof. Adina Turcu Stiolica (RO)



Assoc. Prof. PhD., Senior Specialist in Clinical Pharmacy Research

domain: statistical analysis in preclinical (nanoparticles synthesis), clinical studies, postmarketing studies and pharmacoeconomic research Courses (Meta-analysis, Survival Modeling, PROs, DOE analysis) PhD. (Medicine): "Preclinical-clinical studies on the pharmacological interactions between antidepressants and antihypertensive" [...]

THURSDAY, MAY 11, 2017

Nae Leonard Musical Theatre, Mihai Bravu 50, Galati

CME Course

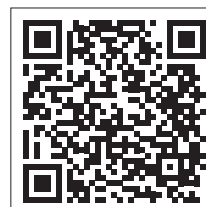
09:00 10:00	Ariel Como (Albania), Mihail Cristian Pirlog (Romania) Mental health – concept, past, present, future
10:00 11:00	Catalin Plesea Condratovici (Romania), Mihai Mutica (Romania) Mental health in Primary Care settings – GP point of view, psychiatric point of view – a socratic dialogue
11:00 11:15	Coffee break
11:15 12:15	Jana Chihai (Moldova), Irina Sacuiu (Romania) Mental health systems – comparative reforms
12:15 13:15	Florin Buhociu (Romania), Valentin Antohi (Romania) Mental health economics: real costs of care.
13:15 13:45	Lunch break
13:45 14:45	Dragos Alexandru (Romania) Let's put the brain in numbers – Mental Health and statistics
14:45 15:45	Marcel Sarpe (Romania) Clinical trials: how, when, why, what for?
15:45 16:00	Coffee break
16:00 17:00	Gabriela Chele (Romania), Petronela Nechita (Romania) Mental health and media needs
17:00 18:00	Diana Bulgaru Iliescu (Romania) Inform consent in the forensic psychiatry
18:00 19:00	Anamaria Ciubara (Romania), Vladimir Poroach (Romania) Opportunities and obstacles in management of paliative cases
19:30	Opening ceremony
20:00 22:00	Welcome cocktail

FRIDAY, MAY 12, 2017 - ROOM A

Natural Sciences Museum Complex Galați – Botanical Garden

09:00 10:15	Ariel Como (Albania), Howard Goldman (USA), Vladimir Nakov (Bulgaria), Mihail Cristian Pirlog (Romania) • Eastern Europe – El Dorado for mental health care? • Q & A	12:00 12:45	Serban Turliuc (RO), Andreea Szalontai (RO) Effects and clinical benefit of treatment of depression with Trazodone, The solution for a mind always in good shape (Educational financial support provided by Angelini)
10:15 11:00	Marcel Sarpe (Romania) Individualizing therapy in persons diagnosed with schizophrenia (Educational financial support provided by Janssen)	12:45 13:15	Lunch break
11:00 11:15	Coffee break	12:45 13:15	Poster session
11:15 12:00	ORAL PRESENTATIONS SESSION (MODERATORS: VASKA STANCHEVA-POPKOSTADINOVA, ANAMARIA CIUBARA) → D Stoyanov, V Di Nicola: Psychiatry in crisis: epistemological and ontological concerns → EM Cojocaru, RE Bogdan Goroftei, L Bulgaru, V Stefanescu: Family support of children with politrauma and severe trauma → BI Nistor, AG Nistor: Paraneoplastic cerebellar degeneration (PCD) - case report → BM Petrescu, A Mitrache, D Vasile, O Vasiliu, AG Mangalagiu, CA Cădea: Prescribing anticholinergic drugs in neurocognitive disorders: pharmacological implications and clinical evidence → D Coșciug, V Lacusta, I Deliv, I Padure, A Hlibiciuc: Psiho-endocrine markers of relapse prediction in alcohol dependence → G Mocanu: The specifics of antipsychotic depot treatment in Galati County → LA Moroianu, C Georgescu, CD Voinescu: Acute Psychotic Episode In Psychostimulant Drug Addicted Teenager → V Kodra, B Zenelaj, E Mitro, D Sanxhaku, B Allkoja, V Alikaj: "Optimal Outcomes" in Autism Spectrum Disorder, Characteristics of Children Who Lost the Diagnosis of Autism → B Zenelaj: Treatment alternatives in resistant Obsessive-Compulsive Disorder in children – A review of the last five years literature	13:15 14:30	Howard H. Goldman (USA) • Publish or perish! Lessons from editor. • Q&A
		14:30 16:00	Marco Sarchiapone (Italy) • Reality of suicide in 21st century • Q & A
		16:00 16:15	Coffee break
		16:15 17:00	Ovidiu Alexinschi (Romania) Excellence comes from inside (Educational financial support provided by Antibiotice)
		17:00 18:30	Joachim Nitschke (Germany), Petar Marinov (Bulgaria), Marius Milcu (RO) • Forensic psychiatry and psychology – principles of assessment and key points of interests. Suicide risk in penitentiary. • Q & A

Scan the code for more details
» <https://mhasee.ro>



FRIDAY, MAY 12, 2017 - ROOM B

Natural Sciences Museum Complex Galați – Botanical Garden

08:30 09:45	Lavinia Duica (Romania) WORKSHOP 1 Confluence elements in the psychopathology and neurobiology of schizophrenia.
09:45 11:00	Adina Turcu Stiolica (Romania) WORKSHOP 2 Patient adherence to antidepressants - measurement and predictors
11:00 11:15	Coffee break
11:45 12:45	Eduard Drima (Romania), Mihai Mutica (Romania), Oana Hanut (Romania), Ghenadie Carausu (Moldova) WORKSHOP 3 Psychiatric Interview. Why, when and which scales to be used
12:45 13:15	Lunch break
14:30 16:00	Iolanda Dumitrescu (Romania), Dan Rosca (Romania) WORKSHOP 4 Mental Health Law - Need for adjustments
16:00 16:15	Coffee break
16:15 18:30	Petre Radescu (Romania) WORKSHOP 5.1 Phenomenology of emotion
20:00 22:00	Dinner

Scan the code for more details
» <https://mhasee.ro>



SATURDAY, MAY 13, 2017 - ROOM A

Natural Sciences Museum Complex Galați - Botanical Garden

09:00 10:00	Maria Ladea (RO), Mihai Bran (RO) • When virtual become reality • Q & A	13:30 14:00	Poster session
10:15 11:00	Cristian Marinescu (RO), Serban Turliuc (RO) The shadow of depression in the light of SSRI (Educational financial support provided by Terapia)	14:00 15:30	Drozdstoj Stoyanov (BG), Ciprian Bacila (RO), Anamaria Ciubara (RO) • Crisis, emergencies and needs human being in real clinical practices • Q & A
11:00 11:15	Coffee break	15:30 16:30	Howard H. Goldman (USA), Marco Sarchiapone (Italy), Germain Weber (Austria) Why are we here? Meet the experts.
11:15 12:45	Howard H. Goldman (USA) • Making Progress in Mental Health Policy in Conservative Times • Q & A	16:30 16:45	Coffee break
12:45 13:30	<p>ORAL PRESENTATIONS SESSION (MODERATORS: MARIA LADEA, PETAR MARINOV)</p> <p>→ BM Petrescu, D Vasile, O Vasiliu, AG Mangalagiu, MA Badic: The psychophysiological effects of chemical terrorist attacks - the Sarin neurotoxic agent</p> <p>→ KI Sarbu, M Asaftei, I Cretu, A Nicoara, I Lazar, I Olariu, P Mihaila, R Vicol, D Obreja, G Ungureanu, G Sumanariu, A Popa: Child depressive disorder</p> <p>→ A Croitoru, D Jipa, M Chirea, M Sava, A Dumitrescu, M Mutica, MA Bogdan: The effect of pulmonary rehabilitation on psychological status and quality of life</p> <p>→ CC Stroescu, S Dumitrache-Rujinski, VB Stroescu, I Erhan, A Croitoru, MA Bogdan: Overlap of attention deficit and hyperactivity disorder with obstructive sleep apnea - a case presentation</p> <p>→ F Dobi, E Duro: The relationship between perceived stress levels and the working life quality of Community Mental Health Center Professionals</p> <p>→ Naci, E Xhelilaj: Parental perceptions about Autism Spectrum Disorder of their children: Impacts and Implications for interventions in Albania</p> <p>→ E Gjoni, Z Dega, E Kabili, F Dobi: The depression of mothers and the impact on children</p> <p>→ I Natsov, R. Trifonov, S Velikova, V Nakov: Comorbidity of depressive symptomatology in patients aged 60-80 years with more than two chronic physical illnesses in general practice</p>	16:45 17:30	<p>ORAL PRESENTATIONS SESSION (MODERATORS: OANA HANUT, RUMIANA DINOLOVA)</p> <p>→ R Ocrain, AI Curt, AI Dobrin: Fractals in our mind: chaos theory in psychiatry</p> <p>→ C Curis: The importance of the therapeutic relationship in diagnostic acceptance in patients with psychosomatic illnesses</p> <p>→ P Nechita, G Craciun, E Ungureanu, M Mutica, O Hanut, M Pirlog, AM Ciubara: Non-voluntary hospitalization of patients with mental disorders in "Socola" Institute of Psychiatry Iasi, Romania</p> <p>→ MN Lupu, MN Sandu: Challenges in intensive treatment of ethnobotanic intoxication</p> <p>→ E Mitro, B Zenelaj, V Kodra, D. Sanxhaku, V Alikaj: Effects of Deep Brain Stimulation in Anorexia Nervosa</p> <p>→ GD Bytyci: Improving metabolic adverse events associated with antipsychotic treatment in children and adolescents</p> <p>→ K Mati, S Tomori, K Qeraj, E Ruci, D Tarifa: Measuring distress in cancer patients: a cancer distress screening with a cancer-specific questionnaire</p> <p>→ I Çajupi, A Velo, E Dokle, E Duro, F Dobi: Mental health profile disorders in care providers of patients with schizophrenia</p> <p>→ R Dinolova-Hodgadjikova, H Hinkov, Z Zarkov, V Stancheva-Popkostadinova: Prevention of depression and anxiety in primary health care</p>
13:30 14:00	<p>Lunch break</p> <p>BOOK LAUNCH, Petre Radescu, "Faurirea omului nou"</p> 	17:30 18:30	<p>Germain Weber (Austria)</p> <p>• Intellectual disabilities an impairment for life satisfaction? • Q & A</p>
		20:00 22:00	Dinner

SATURDAY, MAY 13, 2017 - ROOM B

Natural Sciences Museum Complex Galați – Botanical Garden

08:30 11:00	Petre Radescu (Romania) WORKSHOP 5.2 Phenomenology of emotion	13:30 14:00	Lunch break
11:00 11:15	Coffee break		
12:45 13:30	Raluca Nica (Romania) WORKSHOP 6 Stigma toward mental illness and the role of professionals from health system	14:00 15:30	Marius Milcu (Romania), Razvan Turcu (Romania) WORKSHOP 7 Mental health in workplace - mobbing, burnout, workaholism, occupational stress

SUNDAY, MAY 14, 2017 - ROOM A

Natural Sciences Museum Complex Galați – Botanical Garden

09:00 10:30	Anamaria Ciubara (Romania), Ariel Como (Albania), Ion Coșciug (Moldova), Vladimir Nakov (Bulgaria) • Mental health – needs and opportunities • Open discussion • Q&A
10:30 11:00	ORAL PRESENTATIONS SESSION (MODERATORS: VLADIMIR NAKOV, ALIN TATU) → E Kabili, E Gjoni, F Bara, L Çadri, F Dobi, S Tomori: Cognitive Control Therapy with ADD children and adolescents → O Hanut: Psychiatric manifestations in asthma → LA Moroianu, M Mutica, A Ciubara: Depression in patients with diabetes → S Tomori, M Pinto Da Costa, T Mogren: Migratory trends of Psychiatric Residents in Albania - EFPT Brain Drain Project → Ghenadie Carausu: Therapeutic management in resistant depression.
11:15 12:00	Conclusions. Plans for future actions

Poster session

- AB Ciubara, D Sirbu, V Oltenacu, RC Damaschin, A Ciubara: **Rehabilitation after hip fracture surgery in dementia and cognitively intact patients**
- AB Ciubara, S Ungurianu, V Oltenacu, RC Damaschin, A Ciubara: **Postfracture rehabilitation after hip fracture in patients with dementia**
- LT Lungulescu, CV Lungulescu, V Gheorman, SN Dinescu, V Calborean, MC Pîrlog: **The effect of psychoeducation and anxiety therapy in breast cancer screening**
- M Cuciureanu: **Integration of Complementary and Alternative Medicine into Psychiatry - the Status Quo**
- AIC Barbu, E Radu: **Arachnoid cyst as a possible organic basis for bipolar affective disorder: case report**
- ID Rădulescu, E Stoenescu, R Andrei: **The conundrum of prolonged delirium tremens**
- J Caja, T Mana: **Depression in Terminal Cancer Patients: A Comparative Study Between Males And Females**
- E Bllaca, A Kati: **Deinstitutionalizing mental health in Albania, shortcoming of a national reform**
- LT Lungulescu, CV Lungulescu, V Gheorman, SN Dinescu, V Calborean, MC Pîrlog: **The effect of psychoeducation and anxiety therapy in breast cancer screening**
- E Bllaca, A Kati: **Deinstitutionalizing mental health in Albania, shortcoming of a national reform**
- A Shkembi, G Xhelili: **Fibromyalgia case**
- SH Haralanov, PD Terziivanova, ES Haralanova: **Objective quantification of psychomotor disturbances in patients with depressive episode**

Eficacitate antipsihotică dovedită în
 controlul simptomelor din schizofrenie^{1,2}



Informații esențiale din Rezumatul caracteristicilor produsului INVEGA®

DENUMIREA COMERCIALĂ A MEDICAMENTULUI: INVEGA® (paliperidonă) 3 mg, 6 mg, 9 mg comprimate cu eliberare prelungită

Indicații terapeutice: INVEGA este indicat în tratamentul schizofreniei la adulți și adolescenți cu vârsta de 15 ani și peste. INVEGA este indicat pentru tratamentul tulburărilor schizoafective la adulți. **Doze și mod de administrare:** Doza recomandată de INVEGA pentru tratamentul schizofreniei la adulți este de 6 mg, o dată pe zi, administrată dimineața. Nu este necesară titrarea inițială a dozei. Unii pacienți pot beneficia de doze mai mici sau mai mari în limitele recomandate, de 3 mg până la 12 mg, o dată pe zi. Doza recomandată de INVEGA pentru tratamentul tulburării schizoafective la adulți este de 6 mg, o dată pe zi, administrată dimineața. Nu este necesară titrarea inițială a dozei. Unii pacienți pot beneficia de doze mai mari în limitele recomandate de 6 mg până la 12 mg o dată pe zi. Doza inițială recomandată de INVEGA în tratamentul schizofreniei la adolescenți cu vârsta de 15 ani și peste este de 3 mg, o dată pe zi, administrată dimineața. Adolescenți cu o greutate corporală < 51 kg: doza zilnică maximă recomandată de INVEGA este de 6 mg. Adolescenți cu o greutate corporală ≥ 51 kg: doza zilnică maximă recomandată de INVEGA este de 12 mg. Comprimatele INVEGA trebuie înghițite întregi, cu lichide, și nu trebuie mestecate, împărțite sau zdrobite. Administrarea INVEGA trebuie standardizată în relație cu ingestia de alimente. **Contraindicații:** Hipersensibilitate la substanța activă, la risperidonă sau la oricare dintre excipienți. **Atenționări și precauții speciale pentru utilizare:** Pacienții cu tulburare schizoafectivă tratați cu paliperidonă trebuie să fie monitorizați cu atenție pentru a identifica posibila transformare a simptomelor maniacale în simptome depresive. **Reacții adverse:** Reacțiile adverse la medicament (RAM) cel mai frecvent raportate în studiile clinice la adulți au fost cefalee, insomnie, sedare/somnolență, parkinsonism, acatizie, tahicardie, tremor, distonie, infecții ale căilor respiratorii superioare, anxietate, amețeli, creștere ponderală, greață, agitație, constipație, vărsături, fatigabilitate, depresie, dispepsie, diaree, xerostomie, dureri dentare, dureri musculoscheletice, hipertensiune arterială, astenie, lombalgii, interval QT prelungit pe electrocardiogramă și tuse. Profesioniștii din domeniul sănătății sunt rugați să raporteze orice reacție adversă suspectată prin intermediul sistemului național de raportare: România, Agenția Națională a Medicamentului și a Dispozitivelor Medicale, Str. Aviator Sănătescu nr. 48, sector 1, București 011478 - RO, Tel: + 4 0757 117 259, Fax: +4 0213 163 497, e-mail: adr@anm.ro. **DATA REVIZUIRII TEXTULUI.** Mai 2015. Informații detaliate privind acest medicament sunt disponibile pe website-ul Agenției Europene pentru Medicamente: <http://www.ema.europa.eu/>

Acest medicament se eliberează pe bază de prescripție medicală: PRF. Pentru informații complete de prescriere, vă rugăm să citiți Rezumatul caracteristicilor produsului Invega.

Acesta este un material promoțional destinat exclusiv profesioniștilor din domeniul sănătății.



Schizofrenia, cum poți ajunge de aici

aici?

XEPLION® creează premisele unui viitor mai bun:

- efectul antipsihotic debutează încă din ziua 8²⁻³ și se menține pe termen lung¹
- profil bun de tolerabilitate¹⁻⁵
- administrare o dată pe lună⁶



Acest medicament se eliberează pe bază de prescripție medicală restrictivă: PR. Pentru informații complete de prescriere, vă rugăm să citiți Rezumatul caracteristicilor produsului XEPLION®. Acesta este un material promoțional destinat exclusiv profesioniștilor din domeniul sănătății.

Referințe: 1. Hough D et al. Schiz Res 2010; 116:107-117; 2. Pandina GJ et al. J Clin Psychopharmacol 2010; 30: 235-244; 3. Kramer M et al. Int J Neuropsychopharmacol 2010; 13: 635-647; 4. Gopal S et al. J Psychopharmacol Online First, published on July 8, 2010 as doi: 10.1177/0269881110372817; 5. Hoy SM et al. CNS Drug Rev 2010; 24(3): 227-244; 6. Rezumatul caracteristicilor produsului XEPLION®. Data revizuirii textului: noiembrie 2016.



Informații esențiale din Rezumatul caracteristicilor produsului XEPLION®

XEPLION® 50 mg, 75 mg, 100 mg, 150 mg suspensie injectabilă cu eliberare prelungită.

Indicații terapeutice: XEPLION® este indicat în tratamentul de întreținere al schizofreniei la pacienții adulți stabilizați cu paliperidonă sau risperidonă. La pacienții adulți selectați cu schizofrenie și care au răspuns anterior la administrarea orală a paliperidonei sau risperidonei, se poate administra XEPLION® fără stabilizare anterioară cu un tratament pe cale orală dacă simptomele psihotice sunt ușoare până la moderate și este necesar un tratament injectabil cu eliberare prelungită.

Doze și mod de administrare: Tratamentul de inițiere recomandat cu XEPLION® este o doză de 150 mg în ziua 1 de tratament și o doză de 100 mg o săptămână mai târziu (ziua 8), ambele administrate în mușchiul deltoid în scopul obținerii rapide a concentrațiilor terapeutice. Doza lunară de întreținere recomandată este de 75 mg; anumiți pacienți pot beneficia de doze mai mici sau mai mari din intervalul recomandat cuprins între 25 și 150 mg, în funcție de tolerabilitatea și/sau eficacitatea individuală a pacienților.

Contraindicații: Hipersensibilitate la substanța activă, la risperidonă sau la oricare dintre excipienți. **Atenționări și precauții speciale pentru utilizare:** XEPLION® nu trebuie utilizat pentru gestionarea stărilor de agitație acută sau a stărilor psihotice severe în care trebuie asigurat controlul imediat al simptomelor. **Reacții adverse** la medicament (RAM) foarte frecvent raportate ($\geq 1/10$): insomnia. Profesioniștii din domeniul sănătății sunt rugați să raporteze orice reacție adversă suspectată prin intermediul sistemului național de raportare: România, Agenția Națională a Medicamentului și a Dispozitivelor Medicale, Str. Aviator Sănătescu nr. 48, sector 1, București 011478- RO, Tel: + 4 0757 117 259, Fax: +4 0213 163 497, e-mail: adr@anm.ro. **DEȚINĂTORUL AUTORIZAȚIEI DE PUNERE PE PIAȚĂ:** Janssen-Cilag International NV, Belgia. **DATA REVIZUIRII TEXTULUI:** 11/2016. Acest medicament se eliberează pe bază de prescripție medicală restrictivă: PR. Pentru informații complete de prescriere, vă rugăm să citiți Rezumatul caracteristicilor produsului Xeplion®. Acesta este un material promoțional destinat exclusiv profesioniștilor din domeniul sănătății.

Johnson & Johnson România S.R.L.

Str. Tipografilor, nr. 11-15
Clădirea S-Park,
Corpul B3, Etaj 3, Camera 1,
Corpul B4, Etaj 3 și Corp LB, Etaj 3
Sector 1, 013714 București, ROMÂNIA
Tel. 021 207 18 00
Fax 021 207 18 04

www.janssen.com/romania

